

Mechanisation and its Place in Food Systems

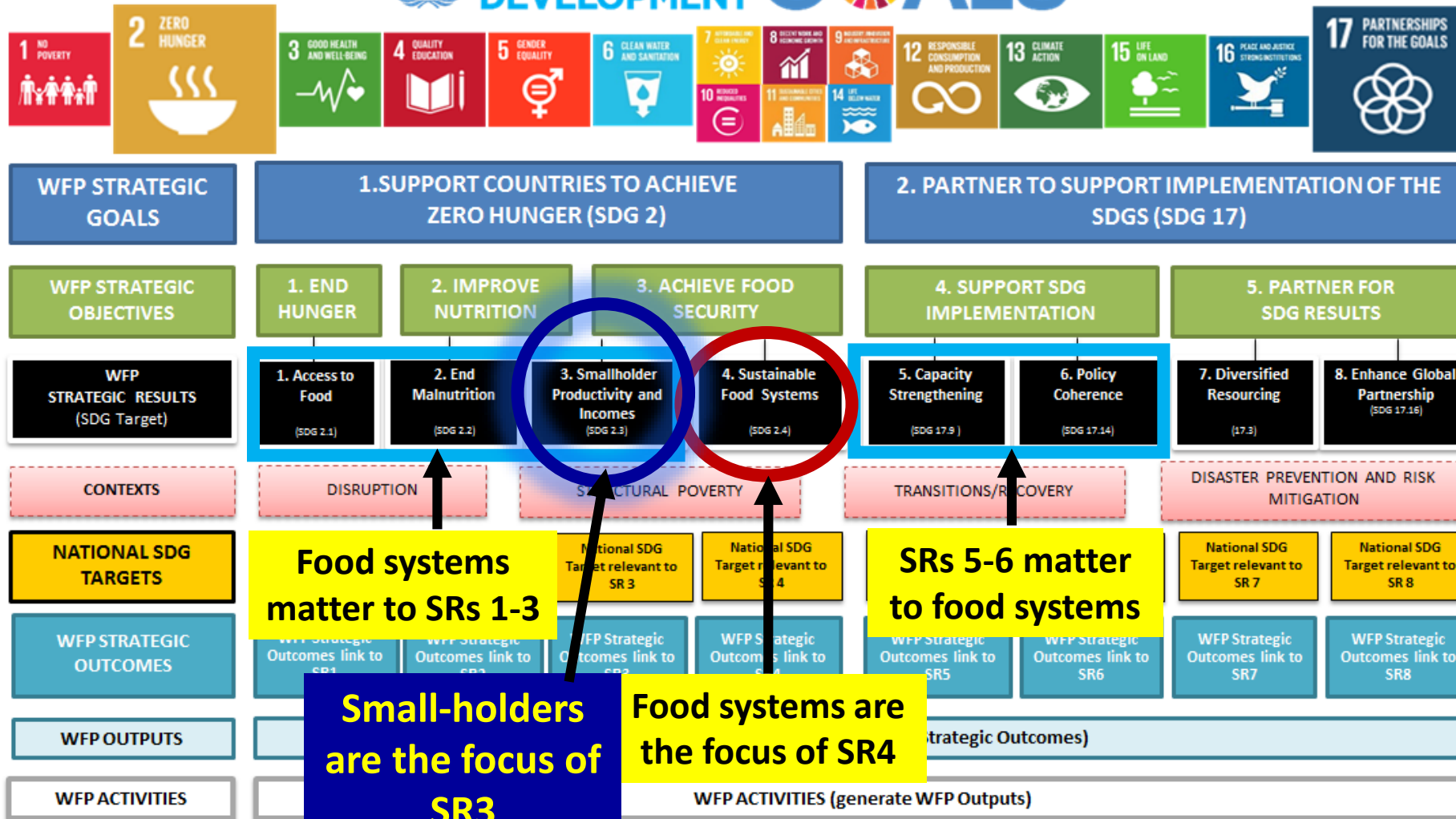
Workshop on Harvesting and Postharvest Mechanization, China

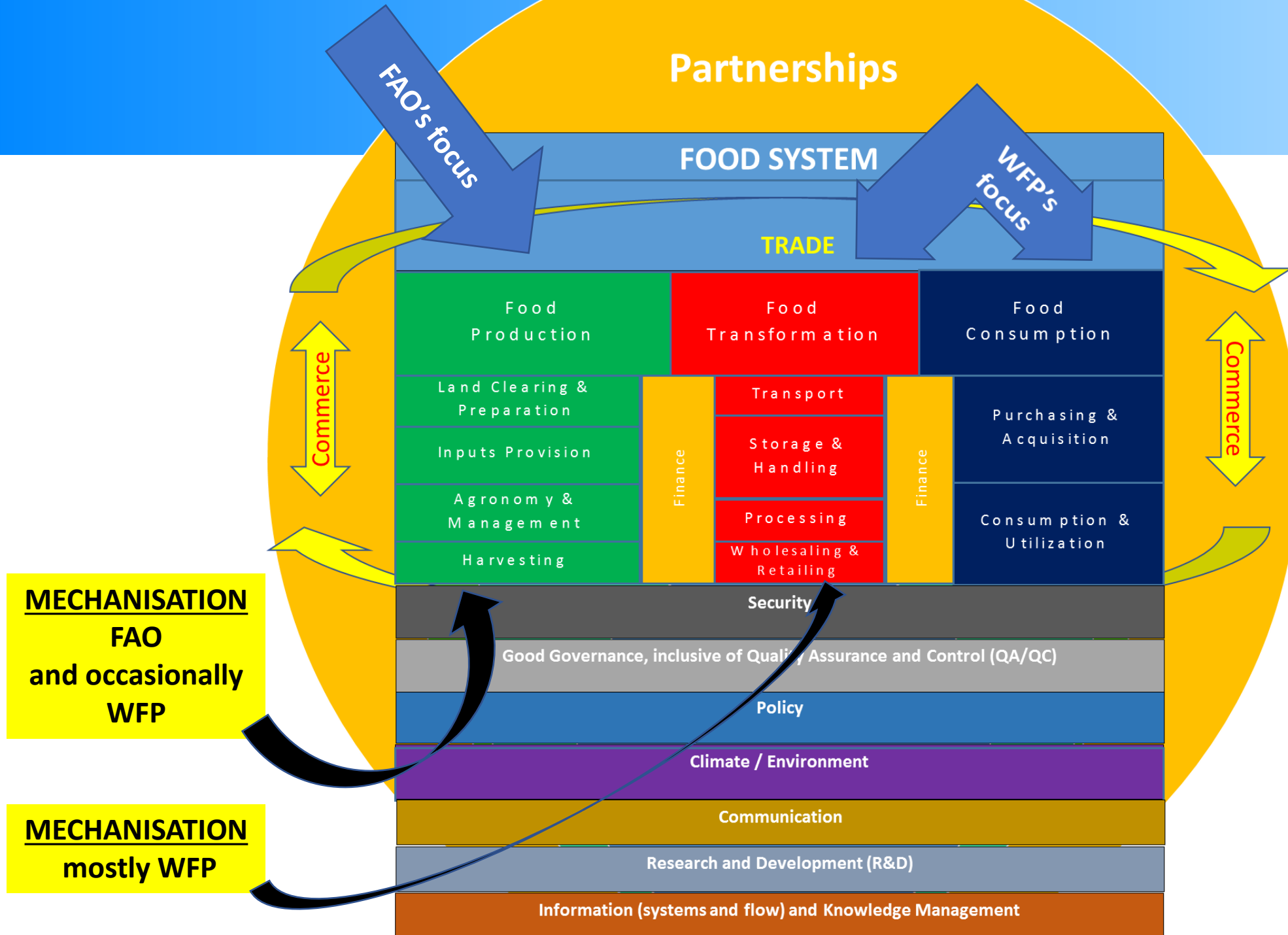
Djordje Vdovic, Regional Logistics Officer, Regional Bureau for Asia/Pacific, Bangkok

26 May 2018

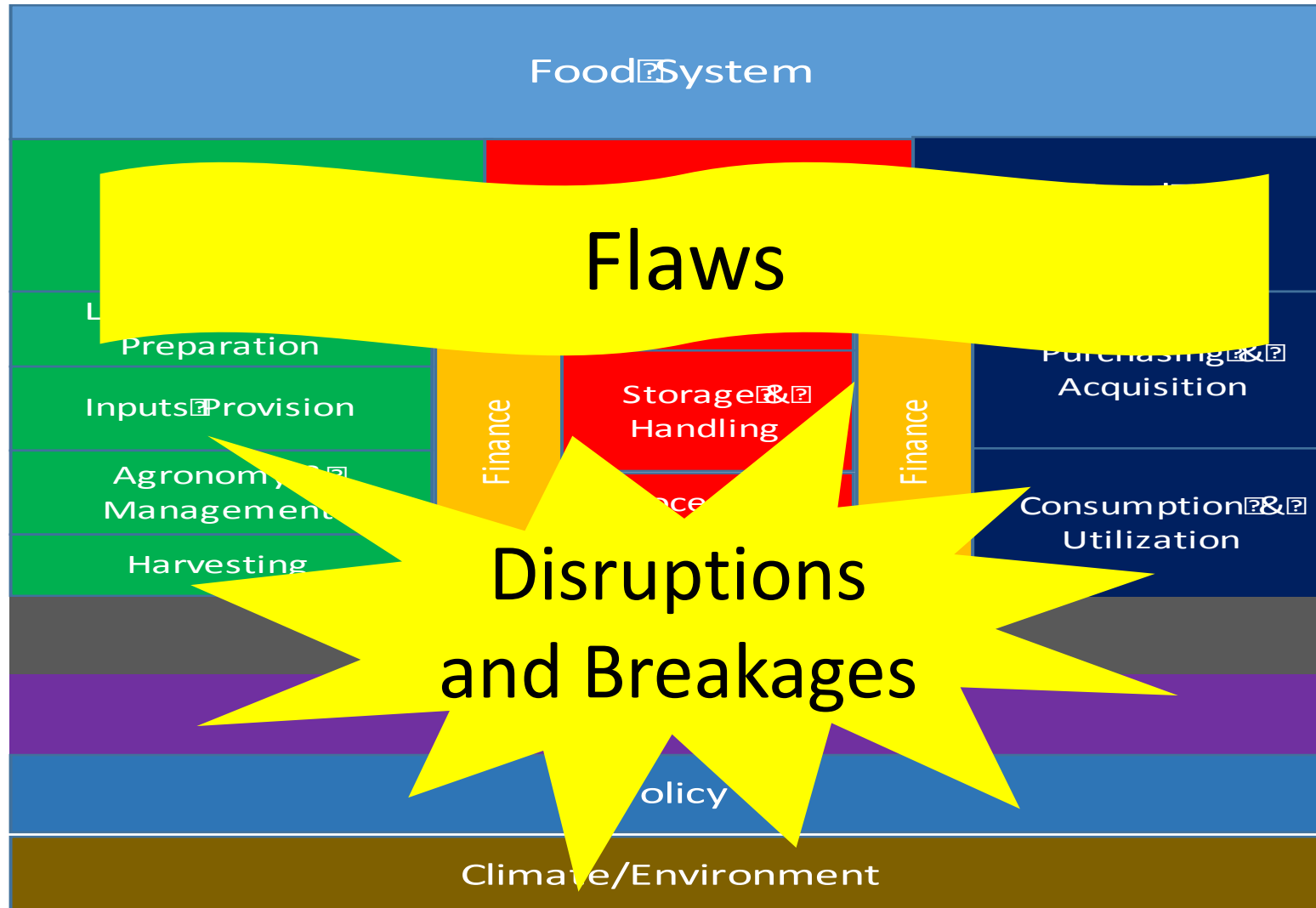


Food System & Small-holder Focus - Core of WFP Programs



The need for food assistance arises from flawed, disrupted, and broken food systems



WFP's food assistance basket:

- Cereals (rice, maize, etc)
- Pulses (beans, peas, lentils, etc)
- Veg. oil (soya, palm, corn, etc)
- Specialized fortified foods
- Canned fish/meat
- Salt
- Sugar

Note: cereals and pulses could be bought locally (in recipient country)

Supply-Demand Dynamics

Issues:

- Subsistence farming
- Infrastructure
- Demographics & Urbanization
- Knowledge & Capacity
- Non-integrated markets
- Land ownership
- Tradition
- Governance
- Security
- ... etc...

Commercial and Enabling Environments (India & DRC examples)

Quality

P4P aims to increase supply & demand for higher quality, nutritious food products

AND
Improve smallholders' access to markets

Demand

Supply

Evolution:

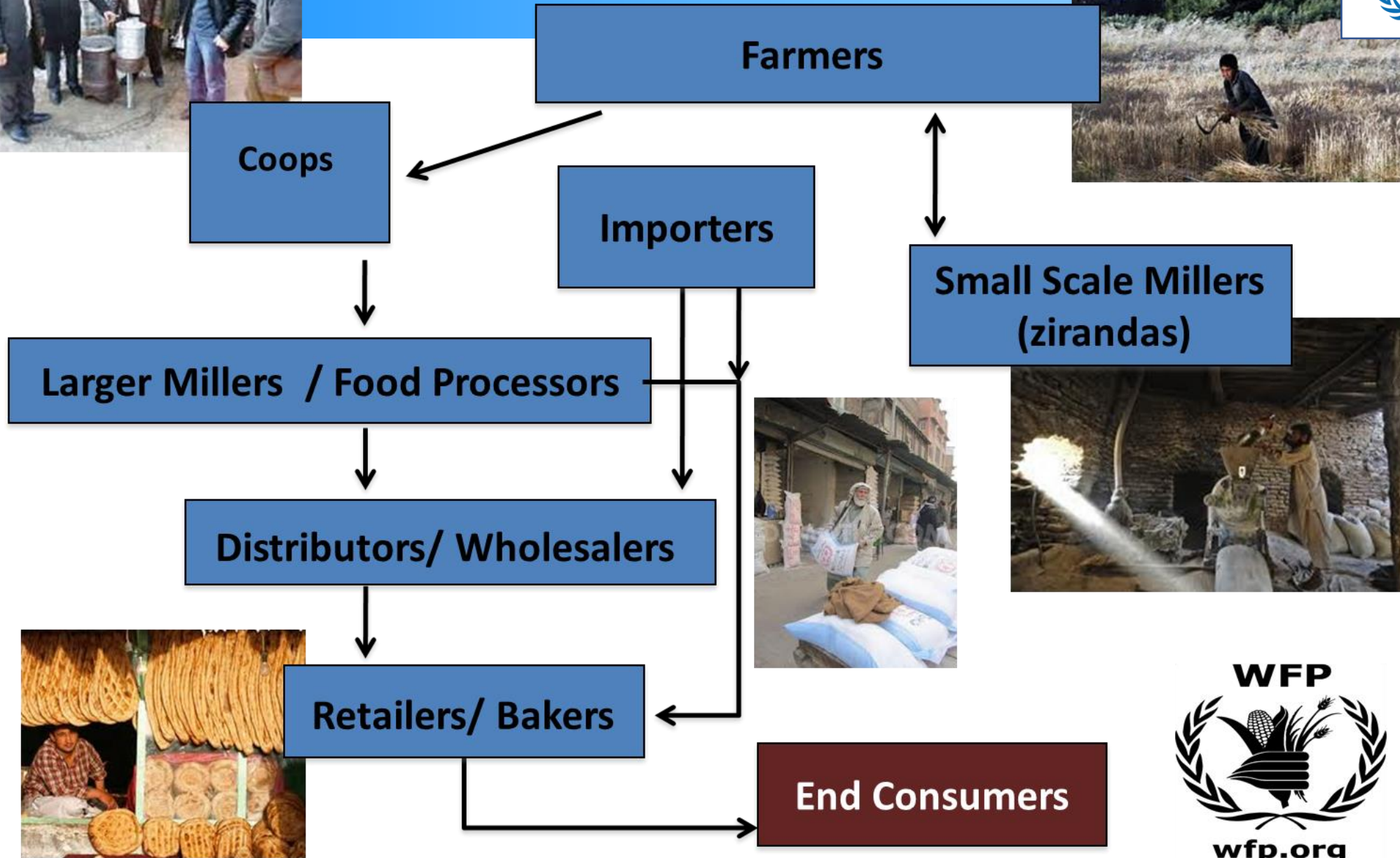
- “Local” purchase of food (staples)
- Purchase for progress (P4P)
- Small-holders in focus
- Food systems
- Holistic (multidisciplinary) programming

Wheat Market

- **Total Need = ~5 million MT**
- **Domestic production = ~3.4 million MT (MAIL, 2011)**
- **Imports = 800,000-1.5 million MT/year (varies by source, MAIL, CSO or Customs Office)**
- **Only a small share of domestically produced wheat is sold in the market, most is:**
 - Consumed by farm households
 - Used to pay land rents or repay debts,
 - Shared with landlords, or bartered (Schulte, 2007)



Wheat Market Structure



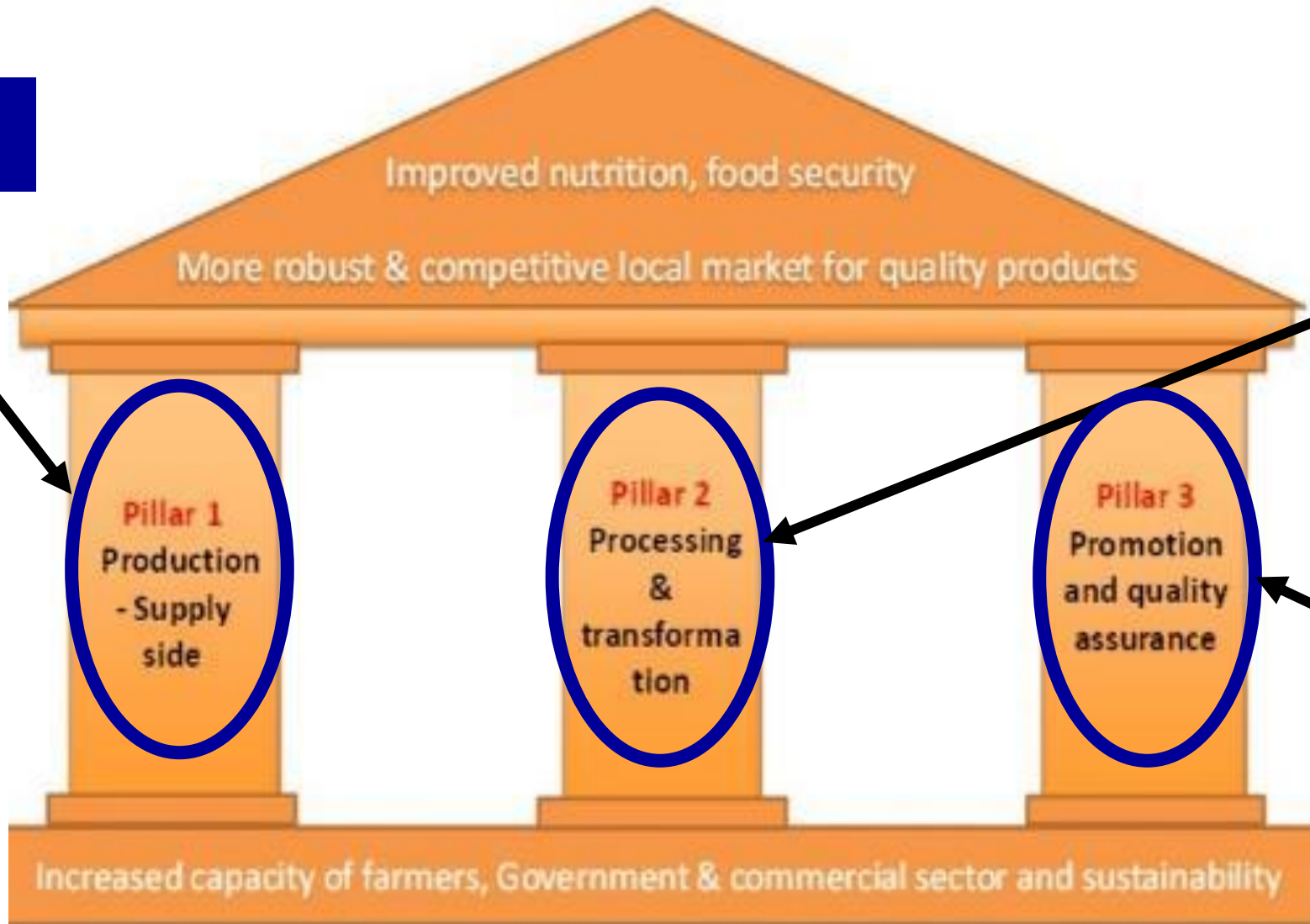
Vision of Purchase for Progress (P4P) in Afghanistan

To create a positive commercial climate and expand market opportunities for agriculture products and nutritious foods in Afghanistan, with ultimate goal for these activities to become commercially self-sustaining.



**Tractors;
thrashers, etc**

**Food processing
plants; micronutrient-
fortificants &
dispensers; etc**



**Lab and testing
equipment, etc**

P4P project is now being integrated with other projects and assistance transfer modalities into a Country Strategy Plan (CSP) – to be approved in second half of 2018



Multidisciplinary Programming – example: Bangladesh Country Strategy Plan (CSP)

Bangladesh CO

SR 1: Access to food SDG Target 2.1	SR 2: NO ONE SUFFERS FROM MALNUTRITION SDG Target 2.2	SR 1: Access to food SDG Target 2.1	SR 4: Food systems are sustainable SDG Target 2.4	SR 5: Countries have strengthened capacity to implement the SDG SDG Target 17.9
SO1: MORE FOOD INSECURE HOUSEHOLDS ARE BETTER ABLE TO ACCESS SUFFICIENT NUTRITIOUS FOOD THROUGH MORE EFFICIENT & EFFECTIVE NATIONAL SOCIAL PROTECTION PROGRAMMES BY 2020 COMPLEMENTED BY EMERGENCY FOOD ASSISTANCE AS REQUIRED	SO 2: NATIONAL ACTIONS TO IMPROVE NUTRITION ARE STRENGTHENED TO ENSURE THAT STUNTING RATE IS REDUCED TO 25% BY 2020 AS PER THE GOVERNMENT'S TARGET	SO3: ENHANCED FOOD SECURITY AND NUTRITION AMONG THE MOST VULNERABLE POPULATION OF COX'S BAZAR AND THE CHITTAGONG HILL TRACTS (CHT)	SO 4: INNOVATIVE APPROACHES TO BOOST THE RESILIENCE OF FOOD INSECURE HOUSEHOLDS EXPOSED TO HIGH RISKS OF CLIMATE RELATED SHOCKS & STRESSES ARE VALIDATED BY 2020	SO5: COST AND LEAD TIME OF EMERGENCY RESPONSE FOR LARGE SCALE NATURAL DISASTERS ARE REDUCED BY 2020
1. Technical assistance, policy advice and handover for school feeding universalisation (ALL) 9 CS/F/CBT	4. Partnerships, advocacy and technical assistance for nutrition (pending) 9 CS/F/CBT	6. Food security and nutrition assistance for refugees in Cox's Bazar (E) 1 F/CBT	9. Malnutrition prevention (Nobo Jabra) (C) 6 SD/CBT	13. Capacity development for preparedness to large scale emergencies (0) 17 CS
2. Technical assistance to enhance safety net impact (A,B,C,D,G) 9 CS/F/CBT	5. National scale-up of quality post-harvest rice fortification (pending) 9 CS	7. Food security and nutrition assistance for vulnerable population in Cox's Bazar (E) 1 F/CBT	10. Livelihood diversification support (Nobo Jabra) (C) 2 SD/CBT	14. Establishment of humanitarian staging area (0) 17 CS/SD
3. Food assistance in emergencies (ALL) 1 F/CBT		8. Food security and nutrition assistance for vulnerable population in Chittagong Hill Tracts (F) 4 F/CBT	11. Technical assistance and awareness building on DRR (Nobo Jabra) (C) 3 CS/CBT	15. Coordination mechanism for supporting emergency responses (0) 17 CS/SD
			12. Validation of innovative approaches to boost resilience (A,B,C) 3 CS/CBT	

SLB -OFFICES

ALL: All sub-offices involved 0: no sub-offices involved

A. Rangpur B. Sirajganj C. Khulna D. Barisal E. Cox's Bazar F. Rangamati G. Dhaka

CONTEXT

Disruptions

Transitions/Recovery

Structural Poverty

Disaster Prevention & Risk Mitigation

● Corporate activity number

● Modality (underlined if dominant): F (food), CBT (incl. comm. vouchers), CS (capacity strengthening), SD (service delivery)

Questions?



Thank You.

Djordje Vdovic
Regional Logistics Officer
Regional Bureau for Asia and the Pacific
WFP, Bangkok
djordje.vdovic@wfp.org